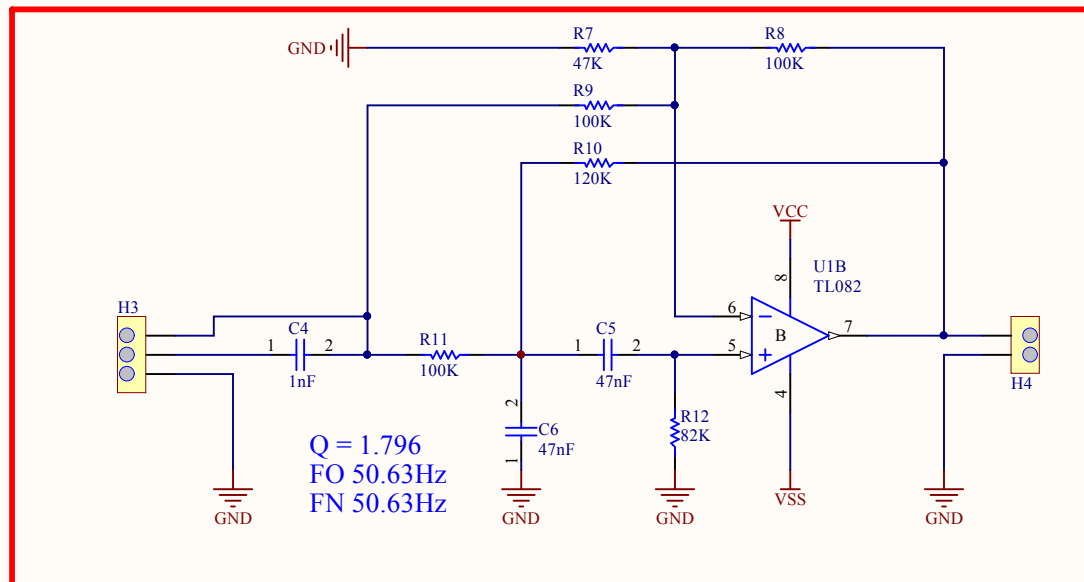
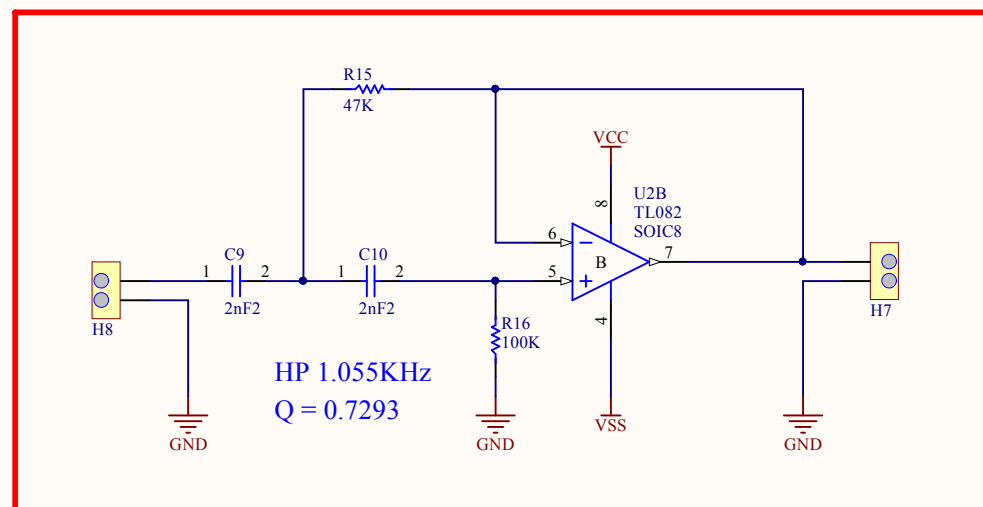
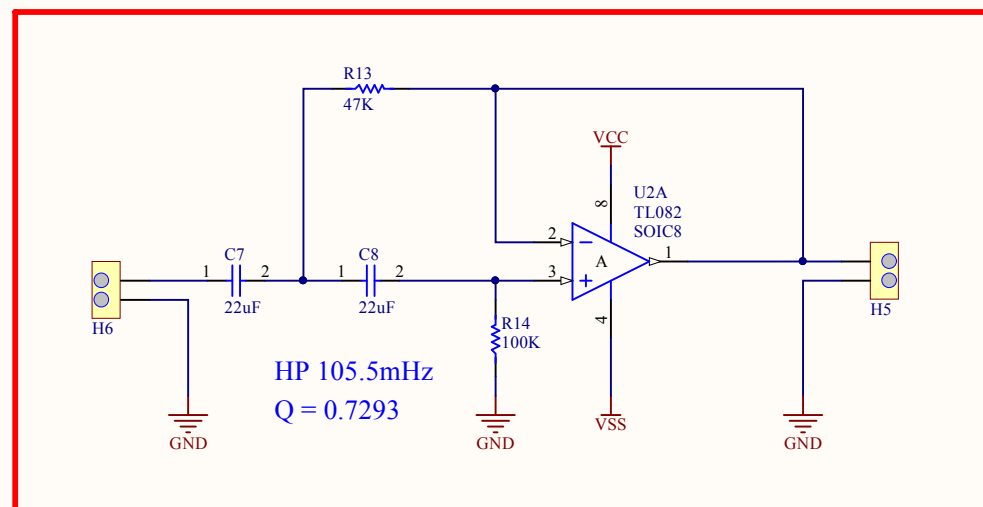


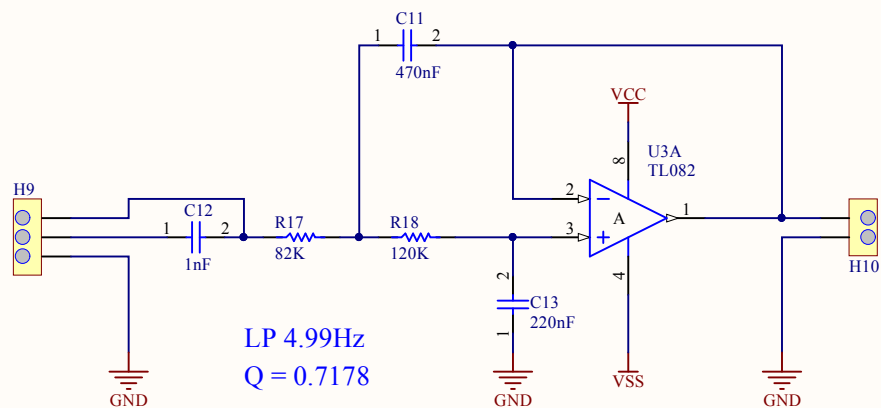
BAND STOP ACTIVE FILTER





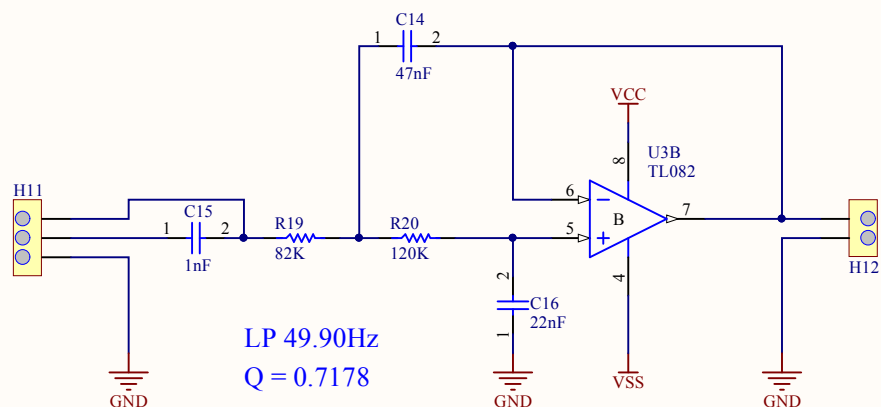
HIGH PASS ACTIVE FILTER

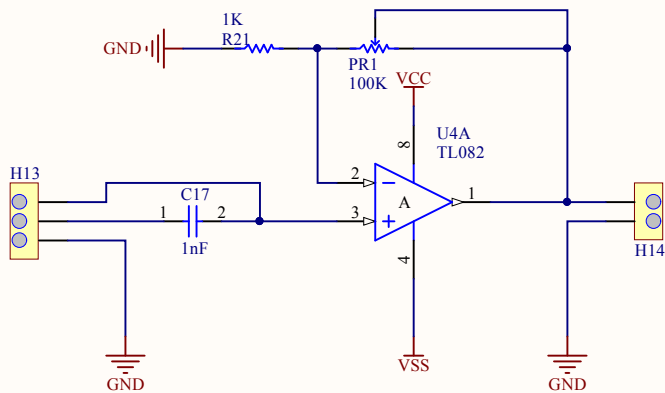




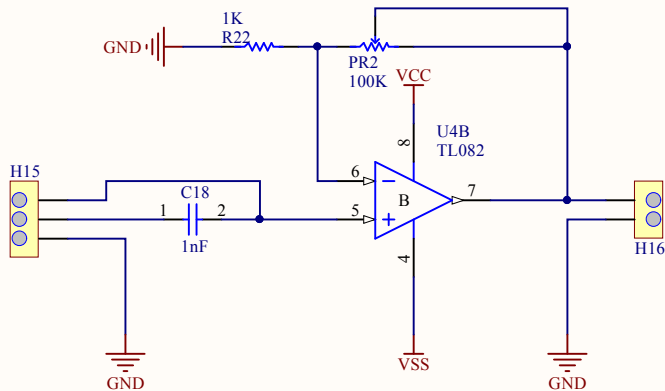
LOW PASS

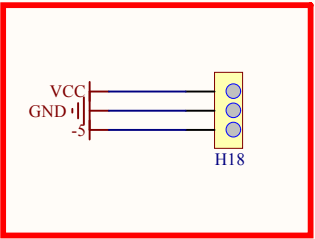
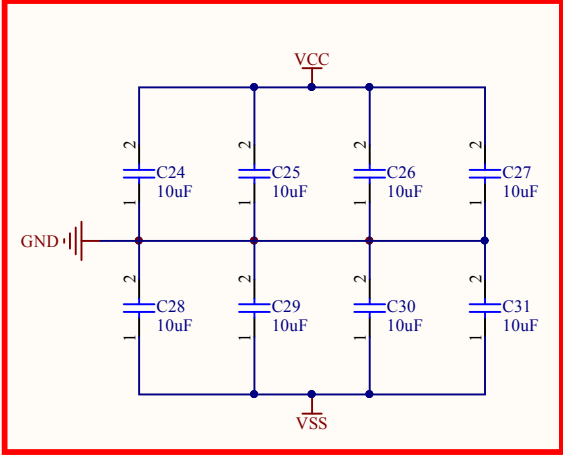
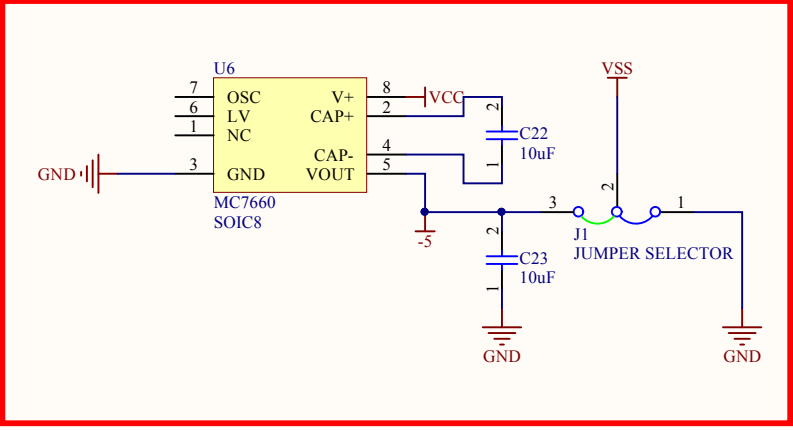
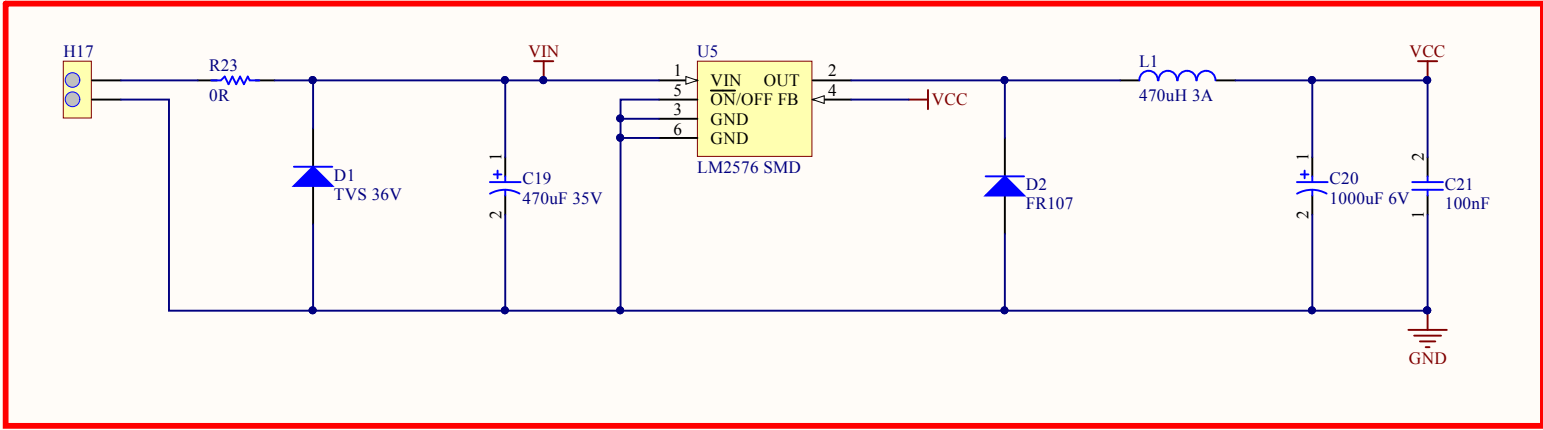
ACTIVE FILTER

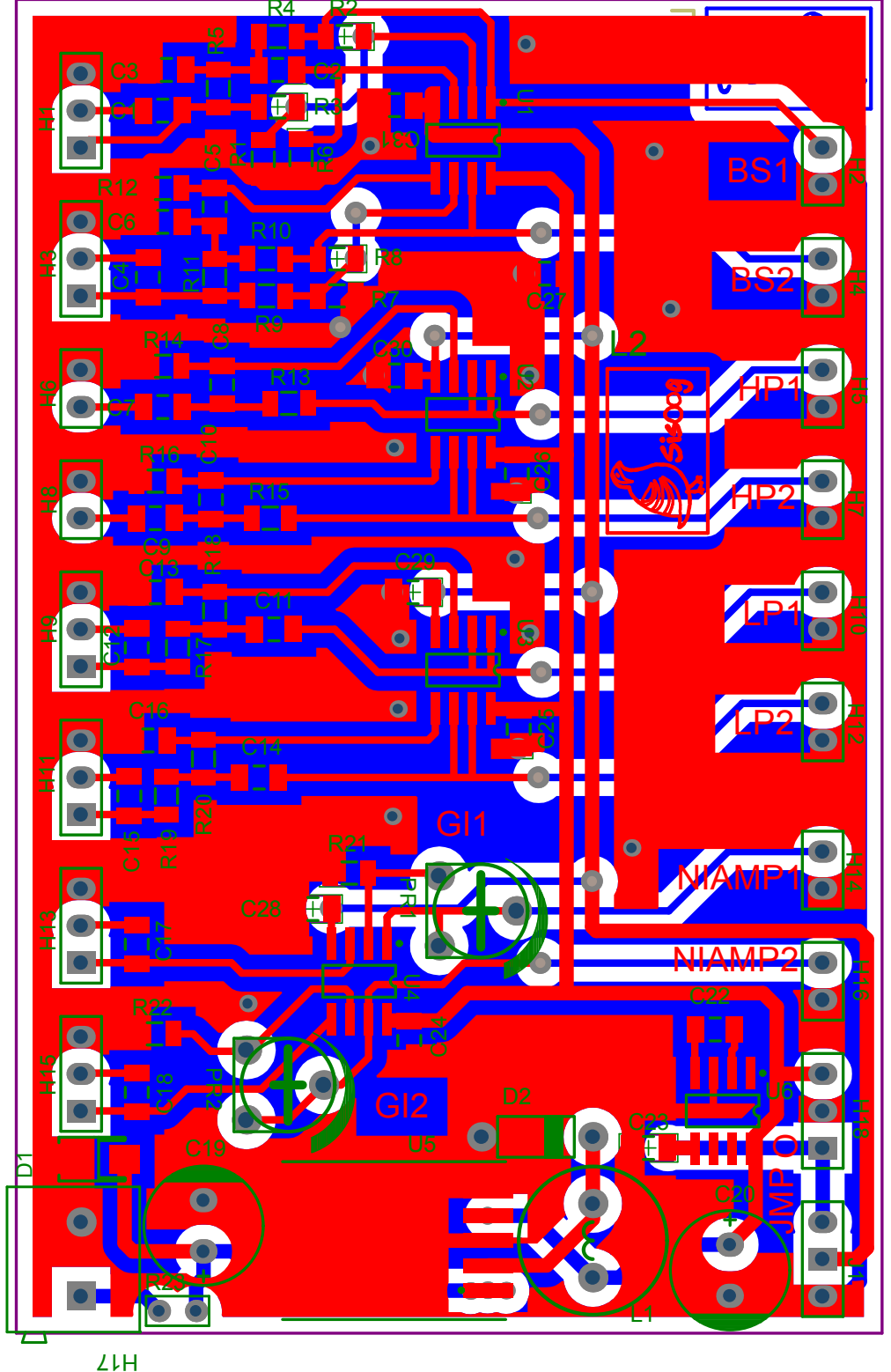




Non inverting Amplifier







H17

| Comment | Description | Designator | Footprint | LibRef | Quantity |
|-----------------|---|--|-------------------------------|-----------------|----------|
| 1nF | | C1, C4, C12, C15, C17, C18 | SMD 1206 | CAP NON | 6 |
| 47nF | | C2, C3, C5, C6, C14 | SMD 1206 | CAP NON | 5 |
| 22uF | | C7, C8 | SMD 1206 | CAP NON | 2 |
| 2nF2 | | C9, C10 | SMD 1206 | CAP NON | 2 |
| 470nF | | C11 | SMD 1206 | CAP NON | 1 |
| 220nF | | C13 | SMD 1206 | CAP NON | 1 |
| 22nF | | C16 | SMD 1206 | CAP NON | 1 |
| 470uF 35V | | C19 | Cap 3.5mm | CAP | 1 |
| 1000uF 6V | | C20 | Cap 3.5mm | CAP | 1 |
| 100nF | | C21 | SMD 1206 | CAP NON | 1 |
| 10uF | | C22, C23, C24, C25, C26, C27, C28, C29, C30, C31 | SMD 1206 | CAP NON | 10 |
| TVS 36V | | D1 | DIODE DO-214AC SMD | Diode | 1 |
| FR107 | | D2 | Diode 7.6mm (B) | Diode | 1 |
| HEDER 3PIN | | H1, H3, H9, H11, H13, H15, H18 | HEADER 3X1 | HEDER 3PIN | 7 |
| HEDER 2PIN | | H2, H4, H5, H6, H7, H8, H10, H12, H14, H16 | Header 2X1 | HEDER 2PIN | 10 |
| HEDER 2PIN | | H17 | Socket Blue 2 | HEDER 2PIN | 1 |
| JUMPER SELECTOR | | J1 | Jumper Selector HEADER 3X1 | JUMPER SELECTOR | 1 |
| 470uH 3A | Inductor | L1 | Inductor 5.8mm | Inductor | 1 |
| SISOOG L | | L2, L3, L4, L5, L6 | SISOOG N | SISOOG L | 5 |
| 100K | | PR1, PR2 | Pot 00 | POTENTIOMETERS | 2 |
| 47K | | R1, R7, R13, R15 | 1206_1/4W | RESISTOR | 4 |
| 100K | | R2, R3, R4, R5, R8, R9, R11, R14, R16 | 1206_1/4W | RESISTOR | 9 |
| 82K | | R6, R12, R17, R19 | 1206_1/4W | RESISTOR | 4 |
| 120K | | R10, R18, R20 | 1206_1/4W | RESISTOR | 3 |
| 1K | | R21, R22 | 1206_1/4W | RESISTOR | 2 |
| 0R | | R23 | Res-(1/4)-Stand | RESISTOR | 1 |
| TL082 | Low-Power Dual Operational Amplifier | U1, U2, U3, U4 | SOIC 8-Lead (3.8mm) | TL082 | 4 |
| LM2576 SMD | | U5 | TO-263 5 LEAD | LM2576 SMD | 1 |
| MC7660 | | U6 | SOIC 8-Lead (3.8mm) | MC7660 | 1 |
| | | | | | |